

PROJECT MANAGER *Jeanette Janiczek (434) 970-3309*
 SURVEYED BY *NXL Incorporated (804) 644-4600*
 DESIGN SUPERVISED BY *McCormick Taylor, Inc. (540) 248-0382*
 DESIGNED BY *McCormick Taylor, Inc. (540) 248-0382*

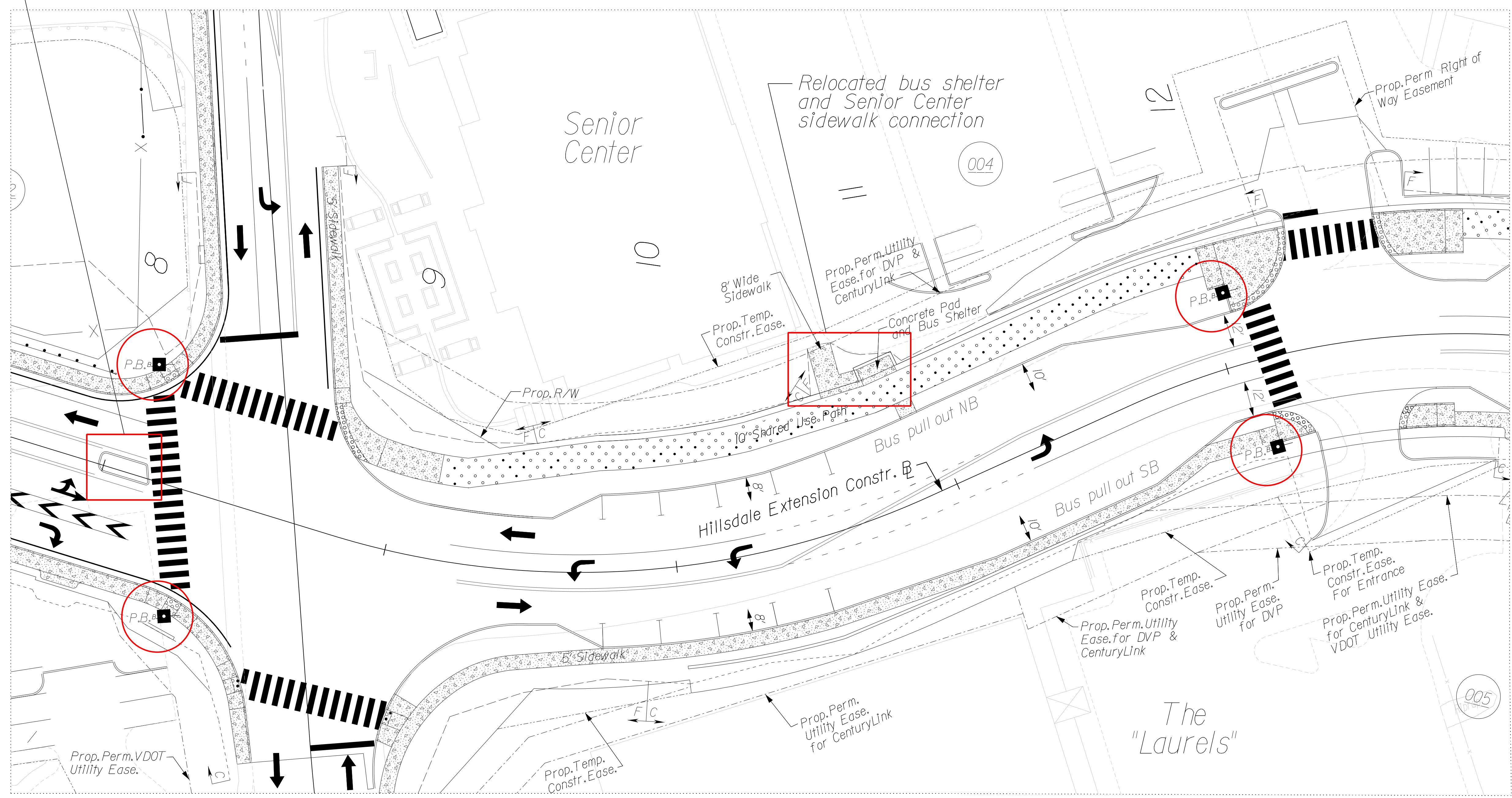
HDE PROP. MULTI MODEL REV. GREENBRIER NON-SIGNALIZED 2-WAY STOP CONDITION 12/18/15

| REVISED | STATE | ROUTE | STATE PROJECT | SHEET NO. |
|---------|-------|-------|---------------|-----------|
| | VA. | | U000-104-119 | EXB |

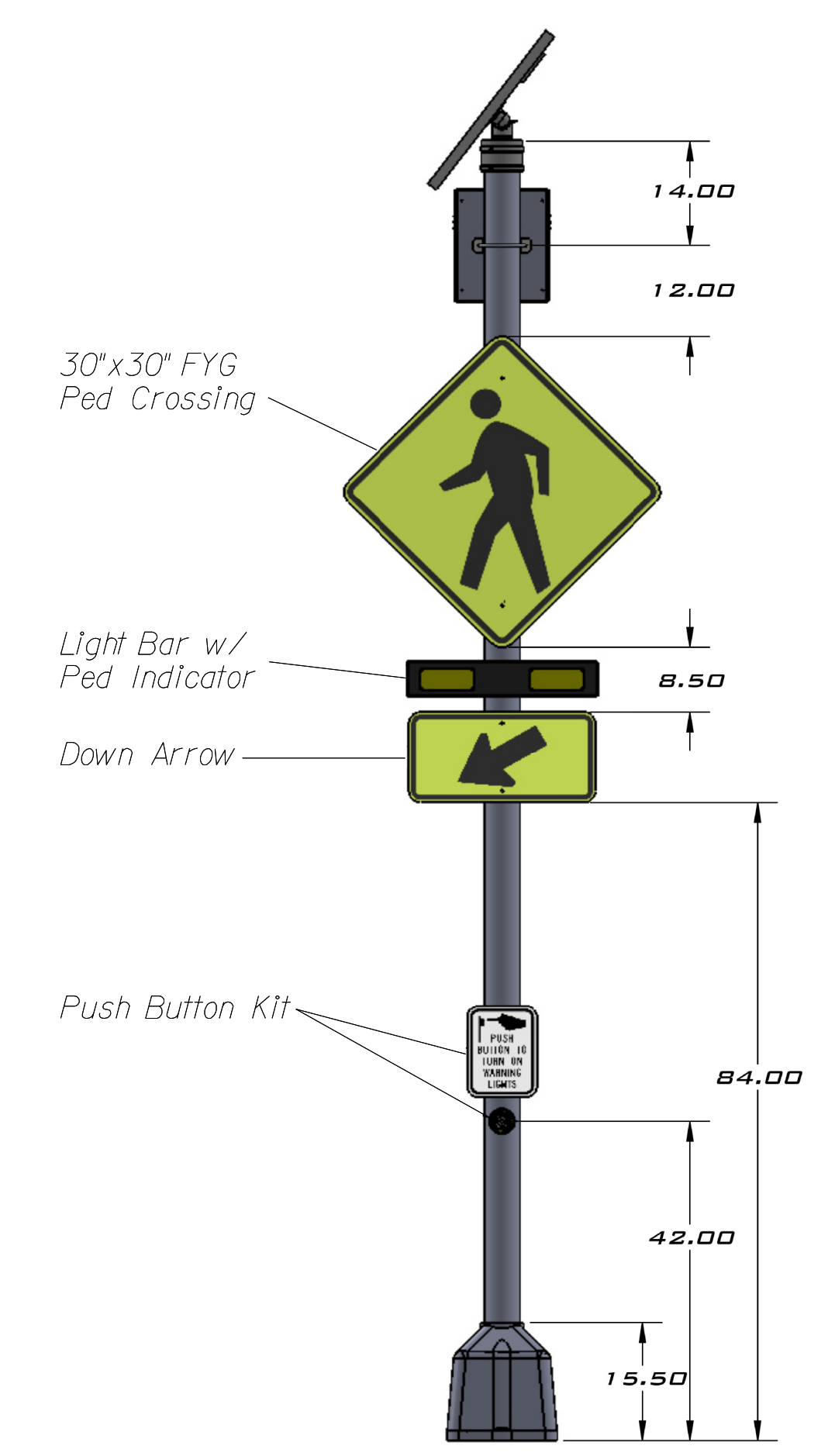
DESIGN FEATURES RELATING TO CONSTRUCTION OR TO REGULATION AND CONTROL OF TRAFFIC MAY BE SUBJECT TO CHANGE AS DEEMED NECESSARY BY THE DEPARTMENT

THIS EXHIBIT IS NOT TO BE USED FOR ANY TYPE OF CONSTRUCTION.

Raised median refuge island added



Rectangular Rapid Flash Beacon



Legend

| | |
|------|-------------------------------------|
| P.B. | Pedestrian Actuated Flashing Signal |
| | New Pavement |
| | Concrete Sidewalk |

- Speed Zone North of Greenbrier to change from 35 to 25 mph (1000' North)
- Advance Pedestrian Road crossing signage will be included

| PROJECT | SHEET NO. |
|--------------|-----------|
| U000-104-119 | EXB |